

1000000



Key Features

- ▶ Reads up to 750 tag per second
- ▶ World-wide frequency coverage
- ▶ Networking, GPIO, USB, micro SD ports
- ▶ Unique on-board HDMI interface
- ▶ Mercury API, Universal Reader Assistant software support
- ▶ Independent read and write RF controls

- ▶ Hardware features
- ▶ Sargass reader architecture
- ▶ Supporting software tools & API

MercuryOS additions include web-based configuration & monitoring using HTTP/HTTPS and SSL/SSH-based security. Reader networking features include a TCP/IP stack plus Cisco-certified DHCP & DNS-based configuration and firmware management.

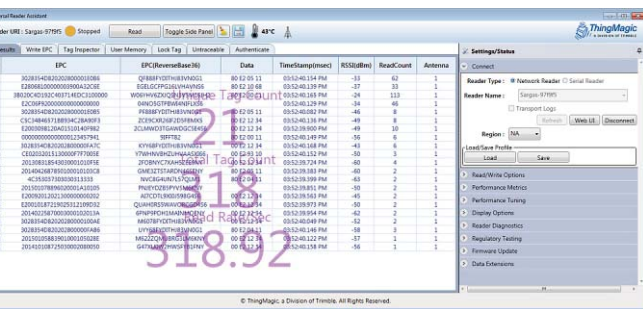
Development Tools

The Sargas reader is based on the powerful ThingMagic Micro module, and supports the Mercury API. This API is common across all ThingMagic reader modules and finished readers. Code that is developed for one system may be reused in other designs and projects.



Sargas 2-PORT, UHF RFID READER

For a sales inquiry or quote
SAVE TYPING
- use the
QR code



Physical & Environmental

Dimensions	87 mm L x 80 mm W x 23.8 mm H
	0.27 Kg (0.6 lbs)
Operating temperature	-20 to +60°C (-4 to +140°F)
Storage temperature	-40 to +85°C (-40 to +185°F)

RF Interface

Antenna Ports	2 ports with RP-SMA connectors
RF Power output	0 dBm to 30 dBm (1 W), ±1.0 dBm
RF Power control	Command-adjustable with separate read and write levels
Default RF Power Output	+30 dBm ±1.0 dBm
Frequency	Pre-configured for these regions: <ul style="list-style-type: none"> ▶ FCC/IC 902-928 MHz, 917.4-927 MHz, 917.5-922.5 MHz (Americas) ▶ ETSI 865.6-867.6 MHz, 869.85 MHz (EU) ▶ TRAI 865-867 MHz (India) ▶ KCC 917-920.8 MHz (Korea) ▶ ACMA 920-926 MHz ▶ SRRC-MII 920-925 MHz (P.R. China) ▶ MIC 916.7-920.9 MHz (Japan) ▶ Open (Customizable) 865-869 MHz, 902-928 MHz

RFID Parameters

Protocols	EPC Gen 2V2 ISO 18000-63 ISO 18000-6B, IPX, AEI ATA * EPC Global LLRP V1.1
Tag read rate	> 750 tags per sec. (settings dependent)
Tag read distance	> 9 m (30 ft) with appropriate antenna

* These protocols require additional licenses

Miscellaneous

Power	4.5 to 5.5 V dc, 15 W max
Regulatory	FCC/IC, CE Mark
Safety	IEC 60950-1 (ed. 2), US-17650-UL

AMERICAS

Trimble Navigation Limited
Technology Sales Group
935 Stewart Drive
Sunnyvale CA 94085
USA

+1-408-592-0875
E: technology@trimble.com

EUROPE-MIDDLE-EAST-AFRICA

Trimble Navigation Limited
Technology Sales Group
Am Prime Parc 11
D-65479 Raunheim
Germany

Tel: +49-6142-2100-0
E: technology@trimble.com

CHINA

Trimble Navigation Limited
Technology Sales Group
20F, Central Tower
China Overseas Plaza, 8 Yard
Guang Hua Dong Li
Chayoyang District
Beijing 100020
China

+86-186-01172960.
E: technology@trimble.com

INDIA

Trimble Navigation Limited
Technology Sales Group
Bangaluru
Karnataka
India

+91-9845 152674
E: technology@trimble.com

OTHER LOCATIONS

Trimble Navigation Limited
Technology Sales Group
935 Stewart Drive
Sunnyvale CA 94085
USA

+1-408-592-0875
E: technology@trimble.com

2016, Trimble Navigation Limited. All rights reserved. Trimble and the Globe & Triangle are trademarks of Trimble Navigation Limited, registered in the United States Patent and Trademark Office and in other countries. All other trademarks are the property of their respective owners.
PN TSG 2001 (4/16)