

Sargas Getting Started Guide



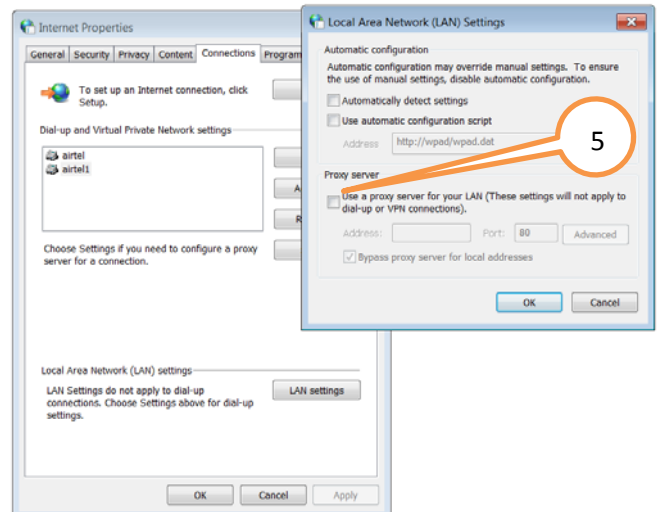
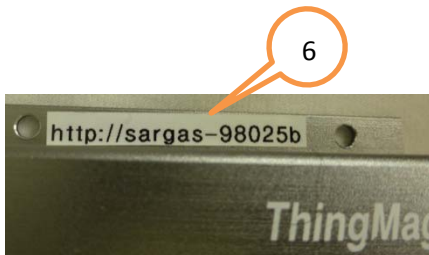
Accessories included in optional Dev Kit:

- AC Adapter with international plugs (PWRADP-S6-MR)
- RP-SMA to RP-TNC cable adapter (CBLADP-1)
- RP-TNC to RP-TNC RF Cable
- RFID Antenna (All bands, 7.5 dBiC)
- LAN Cable (cross-over)
- Sample Tag Pack

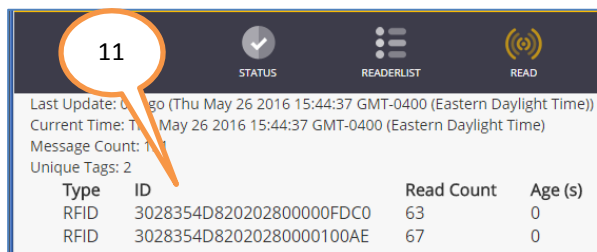


Installing Sargas and reading via a web browser:

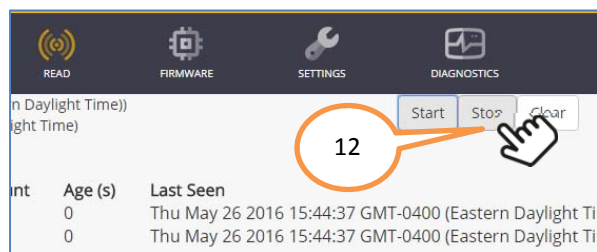
1. Attach RF cables to each other, to the ANT1 port of the reader, and to the antenna.
2. Attach the LAN cable to your network or directly to your PC.
3. Connect the 5V DC power adapter to the Sargas Reader. Install the correct prongs for your AC service onto the adapter and plug it in. Do not power the reader with a USB cable.
4. When the green LED to the right of the power connector turns on, the reader has obtained a network address from the network's DHCP server, or negotiated one with your PC. This can take several minutes.
5. Disable any proxy settings on your PC's IP profile: In your browser LAN settings, disable both automatic configuration and proxy server.



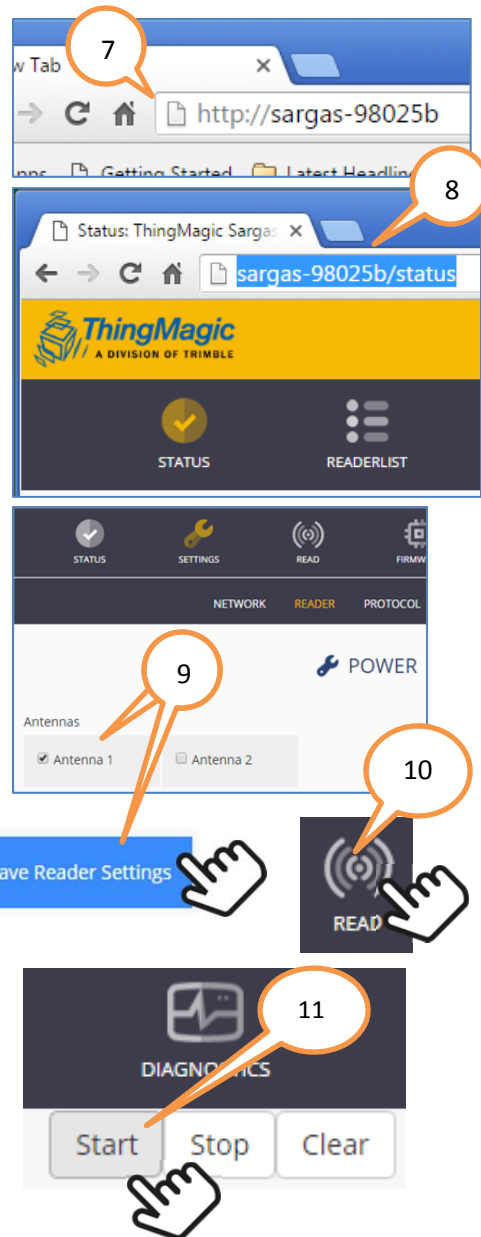
7. Enter the URL as indicated into your web browser. If the Sargas Reader is directly connected to a PC, add “.local” to the URL. When prompted, enter “web” as the username and “radio” as the password.
8. After a few moments, you will be connected to the Sargas status screen.
9. Navigate to the Settings→Reader screen. Select “Antenna 1”, de-select “Antenna 2”. Press “Save Reader Settings”.
10. Click on the “READ” icon at the top of the screen.
11. In the READ screen, click on the “Start” button at the upper right. Tag reading result will appear on the main screen.
12. To suspend reading, click on the “Stop” button.



| Type | ID | Read Count | Age (s) |
|------|--------------------------|------------|---------|
| RFID | 3028354D820202800000FDC0 | 63 | 0 |
| RFID | 3028354D82020280000100AE | 67 | 0 |



| Age (s) | Last Seen |
|---------|---|
| 0 | Thu May 26 2016 15:44:37 GMT-0400 (Eastern Daylight Time) |
| 0 | Thu May 26 2016 15:44:37 GMT-0400 (Eastern Daylight Time) |



For more detailed instructions and additional information, download the Sargas User Guide from <http://www.thingmagic.com/manuals-firmware>. Updated firmware will also be made available this site as it becomes available.

To access more advanced functionality, download our PC-based utility, “Universal Reader Assistant” downloadable from: http://www.thingmagic.com/manuals-firmware#Universal_Reader_Assistant.

To learn more about creating host-based or reader-based programs to control the Sargas Reader, see the Mercury API programmers Guide and SDK, downloadable from: http://www.thingmagic.com/manuals-firmware#Mercury_API